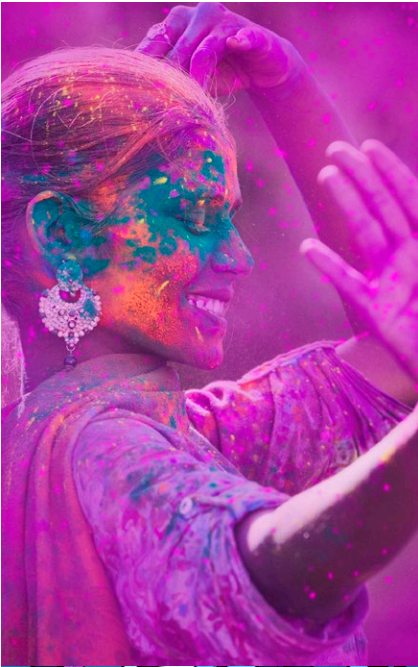


# WestRock Tango® C2S

## Product Guide



### Some resumes tell a story before anything's ever printed on them

Your print job is in good hands with Tango C2S. This premium 92 bright Solid Bleached Sulfate (SBS) paperboard is coated on both sides, plus it has an added ingredient not found in other SBS products: a proven reputation for outstanding runnability, printability and consistency.

#### Features and Benefits

**The perfect shade.** Its clean-white color is perfect for achieving rich printed images with greater depth and natural flesh tones.

**Impressive fade resistance.** Proprietary coating and fade-resistant design provide a longer shelf life for maximum value.

**Uniformity.** A double coating and identical finishing processes result in outstanding side-to-side uniformity and print performance.

**Sturdier.** Tango C2S is as much as 80% sturdier\* than coated freesheet cover. That means Tango printed pieces feel more substantial and higher quality in consumers' hands, which helps strengthen brands, influence consumers and lift response rates.

**Reliable.** Sheet cleanliness, excellent ink lay-down and trouble-free performance, whether it's on press or finishing.

**Peerless.** As a true SBS, Tango single-ply paperboard is optimized with the right blend of hardwood and softwood pulp. Because it's produced at a fully integrated mill, you can count on Tango products for strength, sturdiness, runnability and visual appeal.

**Responsible.** All WestRock North American paperboard mills are certified to the SFI®, PEFC™ and FSC® Chain of Custody standards.† All Tango products are recyclable.

#### Product Uses



Entertainment and Sports Tickets  
10 pt



POP Displays  
10 pt-24 pt



Signage  
12 pt-48 pt



Brochures  
10 pt



Lottery Tickets  
10 pt



Gift Cards  
28 pt, 30 pt



Business Cards  
14 pt, 16 pt



Photo Books  
10 pt



Menus  
12 pt



Direct Mail and Postcards  
10 pt-18 pt



Sports and Game Cards  
12 pt-24 pt



Banners  
12 pt, 14 pt

#### Product Classifications

##### Product type

SBS Paperboard

##### Structure

Solid Bleached Sulfate  
Double Clay Coated Both Sides



To learn more about Tango C2S, go to [westrock.com/TangoC2S](https://westrock.com/TangoC2S) or scan here.



# Tango C2S

## Product Guide

Grade Availability by Caliper															Units	Method	
Caliper (pts)	U.S.	◆0.010	◆0.012	0.014	0.016	0.018	0.020	0.024	0.028 <sup>§</sup>	0.030 <sup>§</sup>	0.032 <sup>§</sup>	0.036 <sup>§</sup>	0.040 <sup>§</sup>	0.048 <sup>§</sup>	inches	T-411	
Thickness	Metric	254	305	356	406	457	508	610	712	763	813	915	1017	1220	microns	T-411	
Nominal Basis Weight	U.S.	138	160	180	195	212	230	275	325	345	365	395	425	500	lbs/3000 sq ft (24"x36")	T-410	
		83	96	108	117	128	138	166	196	208	220	238	256	301	(20"x26")	T-410	
	Metric	220	260	295	320	345	375	440	529	561	594	643	691	813	gsm	T-410	
Moisture		4.8	4.8	4.8	4.8	4.8	4.8	4.8	4.8	4.8	4.8	4.8	4.8	4.8	percent	T-412	
Smoothness																	
Parker Print	Both Sides	1.0	1.0	1.0	1.0	1.0	1.0	1.0	1.0	1.0	1.0	1.0	1.0	1.0	1.0	μm	T-538
Stiffness																	
Taber 15°	MD	60	100	135	203	245	315	470	440	540	640	800	1000	1500	gf-cm	T-489	
	CD	32	50	70	95	126	165	241	230	290	350	470	530	800	gf-cm	T-489	
Color																	
Brightness		92	92	92	92	92	92	92	92	92	92	92	92	92	percent	T-452	
CIE	L*	94.5	94.5	94.5	94.5	94.5	94.5	94.5	94.5	94.5	94.5	94.5	94.5	94.5	L*	CIELAB SCAN-P 72	
	a*	1.9	1.9	1.9	1.9	1.9	1.9	1.9	1.9	1.9	1.9	1.9	1.9	1.9	a*	CIELAB SCAN-P 72	
	b*	-8.0	-8.0	-8.0	-8.0	-8.0	-8.0	-8.0	-8.0	-8.0	-8.0	-8.0	-8.0	-8.0	-8.0	b*	CIELAB SCAN-P 72

## Additional Product Information

### Sustainability

- All Tango products are recyclable.
- All WestRock North American paperboard mills are certified to the SFI<sup>®</sup>, PEFC<sup>™</sup> and FSC<sup>®</sup> Chain of Custody standards.‡
- ◆ Recycled fiber content available by specification.

### Food Contact

- Meets multiple national requirements for food contact packaging, e.g., US and Canada. Contact your sales representative for information on specific markets and end uses.
- ISEGA Certificate available.
- Koscher documentation available.

### Environmental and Safety

- Notices under U.S. California Proposition 65 and the EU REACH are not required.
- Elemental Chlorine Free (ECF) bleached fiber.
- Meets heavy metal limits of the U.S. Model Toxics in Packaging rules and Article 11 of EU Directive 94/62/EC.

### Quality

- Produced at an ISO 9001 certified facility.

All WestRock North American paper mills are certified to the SFI<sup>®</sup>, PEFC<sup>™</sup> and FSC<sup>®</sup> Chain of Custody Standards. Certificate Codes: SFI Certified Sourcing: NSF-SFI-CS-6S751, SFI CoC: NSF-SFICOC-6S751, PEFC: NSF-PEFCOC-6S751, FSC Company Code: FSC-C104002.

<sup>†</sup> Sturdiness based on Tango C2S Taber Stiffness measure compared to coated freesheet at equivalent cover weights.

<sup>‡</sup> Contact your WestRock sales representative for certified fiber or recycled fiber availability for Tango products.

<sup>§</sup> Duplex structure. Contact your WestRock sales representative to learn more.

©2021 WestRock Company. WESTROCK, WestRock and Design, the WestRock logo and Tango are trademarks owned by WestRock Company. All other trademarks are properties of their respective owners. All rights reserved.

TPG-1021-C2



To learn more about Tango C2S, go to [westrock.com/TangoC2S](https://westrock.com/TangoC2S) or scan here.

